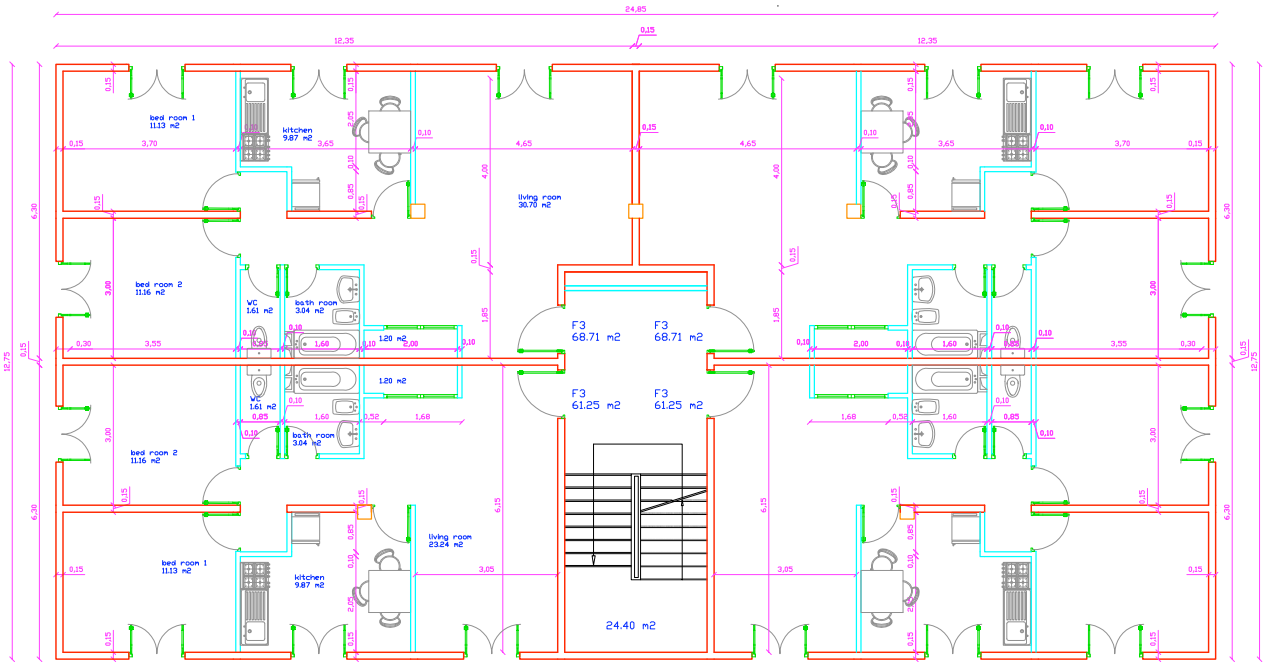


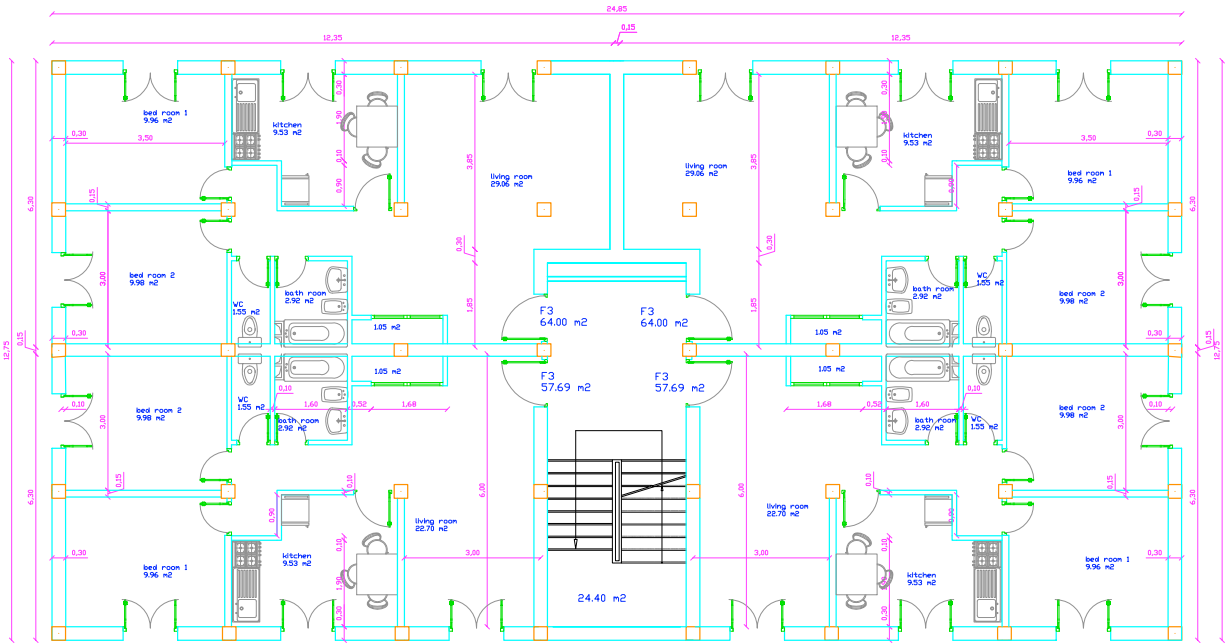
ARCHITECTURAL PLANS

5 story building - 316 m² per floor

COFFOR FORMWORK



COLUMN AND BEAMS

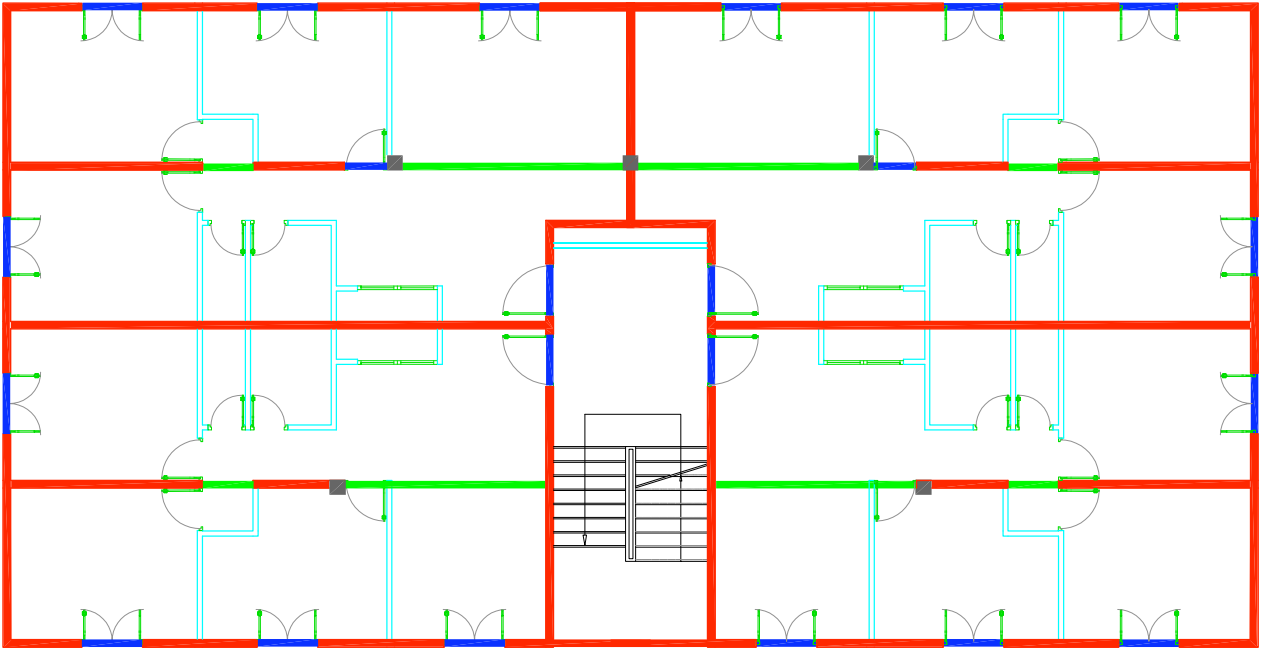


STRUCTURAL DRAWING

5 story building - 316 m² per floor

COFFOR FORMWORK

- beams + bricks
- COFFOR lintels
- columns
- COFFOR walls
- beams



COLUMN AND BEAMS

- beams + bricks
- beams
- columns

